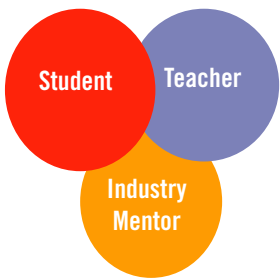


RETHINK HIGH SCHOOL CREDIT

EXPANDED LEARNING OPPORTUNITIES

A Solution to Engage and Prepare Rhode Island Youth for the Future

In a recent survey of 500 high school dropouts, the most common reason that students gave for dropping out was that they didn't feel connected to or engaged by their education and that it wasn't relevant to future career opportunities. One strategy that high schools across the Rhode Island are using to better engage and prepare students for college and career are Expanded Learning Opportunities for Credit (ELOs for Credit). ELOs for Credit provide students with an opportunity to gain credit towards graduation for rigorous learning experiences that take place outside of the traditional classroom. Working closely with industry mentors and teachers, students develop a hands-on and real world learning experience that are aligned to academic and industry standards. Students work towards key learning objectives and a final product and receive credit upon demonstration of their learning goals.



Benefits of ELOs

- Make learning relevant and engaging for *all* students
- Personalize learning experiences
- Allow students to explore career interests, expand upon learning in the classroom
- Push students to apply knowledge and skills in a real-world setting
- Help students develop skills for college and career success

Outcomes

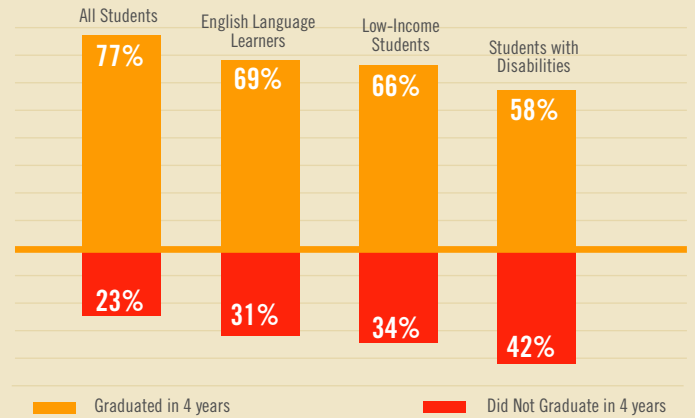
- Over **400 students** in Central Falls, Woonsocket, and Providence have received credit through ELOs since 2009.
- **Four additional school districts** have developed plans to pilot and support a system of ELOs.
- ELOs were integral to increasing the graduation rate by 18% from 2010 to 2012 at Central Falls High School.^[1]
- Students at Central Falls who participated in ELOs cited increased interest in the subject matter, more incentives to attend school, improved learning habits, higher academic motivation, better self-confidence, and greater achievement.^[2]



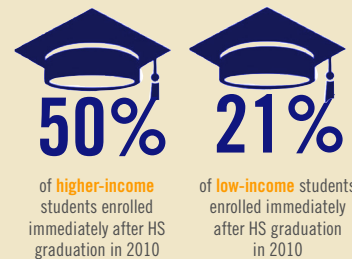
College and Career Readiness in RI

While graduation rates in Rhode Island have risen from 70% in 2007 to 77% in 2012, a large proportion of students are still not graduating from high school on time and/or are unprepared for the RI workforce, which increasingly demands a college degree.

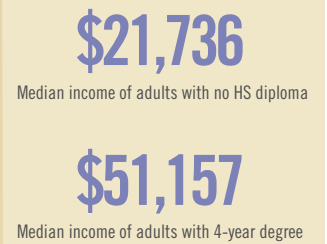
FOUR YEAR HIGH SCHOOL GRADUATION RATE, 2012



4-YEAR COLLEGE ENROLLMENT

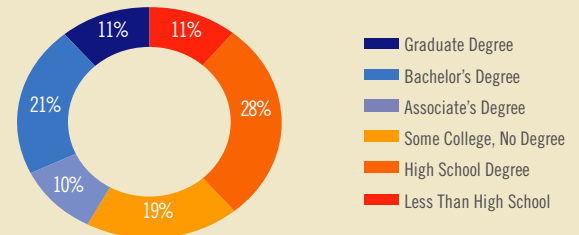


COST OF DROPPING OUT



FUTURE WORKFORCE PROJECTION

By 2018, 61% of jobs in Rhode Island will require at least some college, while only 11% of jobs will require less than a high school diploma.^[3]



Sources: RI Kids Count Fact Book 2013; "Improving College Access and Completion in RI" Issue Brief, June 2013

More Information

If you are a school district interested in piloting ELOs or an industry or community partner interested in supporting ELOs, contact Michelle.Un@afterschoolri.org for more information.

For more information, visit www.afterschoolri.org

RETHINK HIGH SCHOOL CREDIT

ELOs *in Action*



THE COLLEGE CRUSADE
OF RHODE ISLAND

Inspire. Support. Believe.

Critical Thinking, Writing and Media Literacy *Providence, Woonsocket, Central Falls*

In partnership with Providence College, students improve their writing skills while developing a multimedia marketing and advertising campaign.



ACE MENTOR PROGRAM

ACE Mentor Program

Providence, Woonsocket, Central Falls

Students explore and develop skills for careers in architecture, construction, and engineering through unique design projects and job-site tours, under the mentorship of industry professionals.



Rhode Island Urban Debate League

Providence, Woonsocket, Central Falls

Students are empowered to expand their minds and project their voices through debate and equip students with the academic skills, leadership abilities, and ambition to succeed in high school and graduate well prepared for college, employment, and engaged citizenship.



RiverzEdge Arts Project

Woonsocket

RiverzEdge creates positive educational and economic outcomes for youth and their communities through artistic expression, disciplined effort and self-reliance.



URI College of Pharmacy

Woonsocket

Students work alongside professors and students at URI's College of Pharmacy to learn and apply pharmacy concepts in labs and experiments. Through this experience, students also gain an understanding of the demands of a career in pharmacy.



Brown University Engineers Without Borders *Providence (The Hub)*

The Build-a-Bike ELO teaches students to put together a bicycle and perform practical maintenance procedures. Additionally, students are able to put their creativity to use by conceptualizing and implementing a key modification or accessory to the bike.



Young Voices

Providence, Woonsocket, Central Falls

Young Voices transforms urban youth into powerful advocates who work with adult leaders to make a difference on behalf of their peers. Through the Principal's Leadership Program and the Leadership Transformation Academy, students receive intensive training to develop leadership skills in critical thinking, presentation and public speaking, communication, and professionalism.